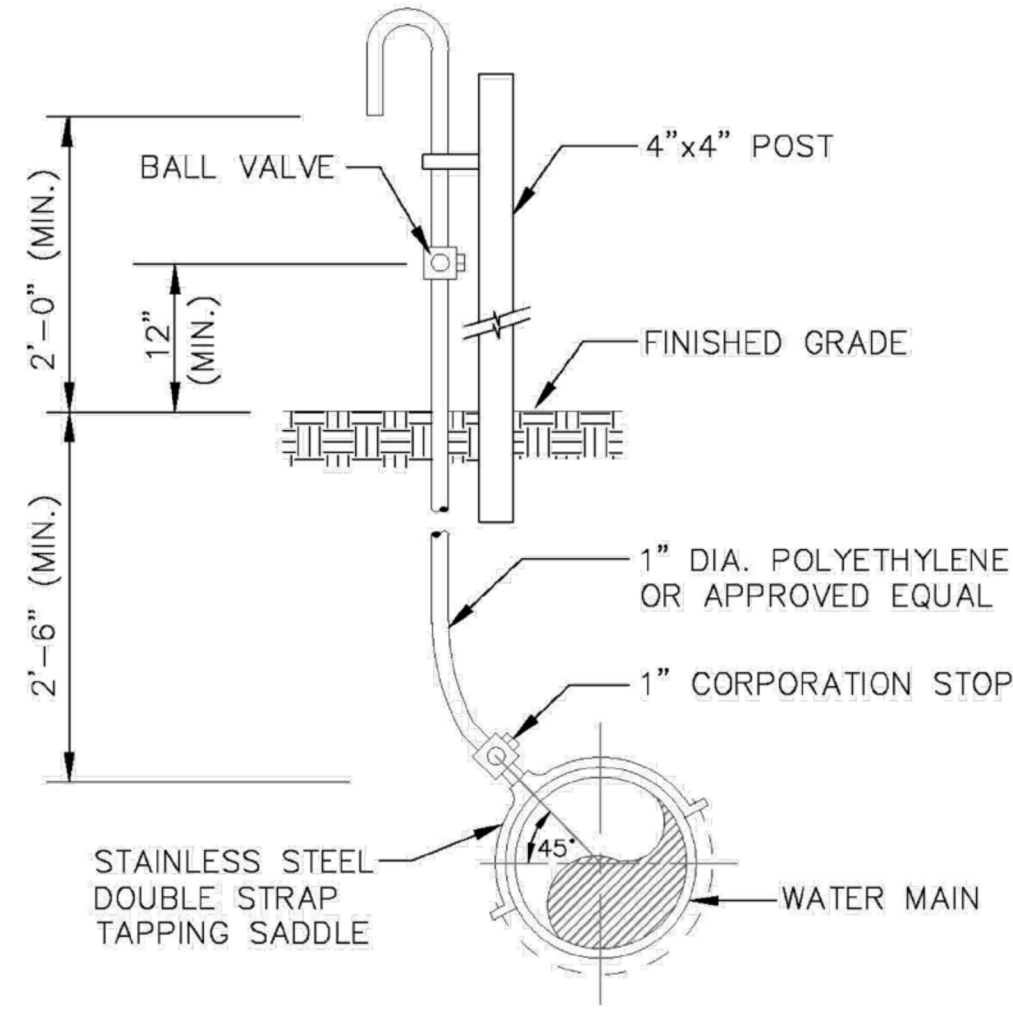


J:\City STANDARDS\2019 Standards Details\Water 1-1.dwg, 11/2/2018 2:33:16 PM

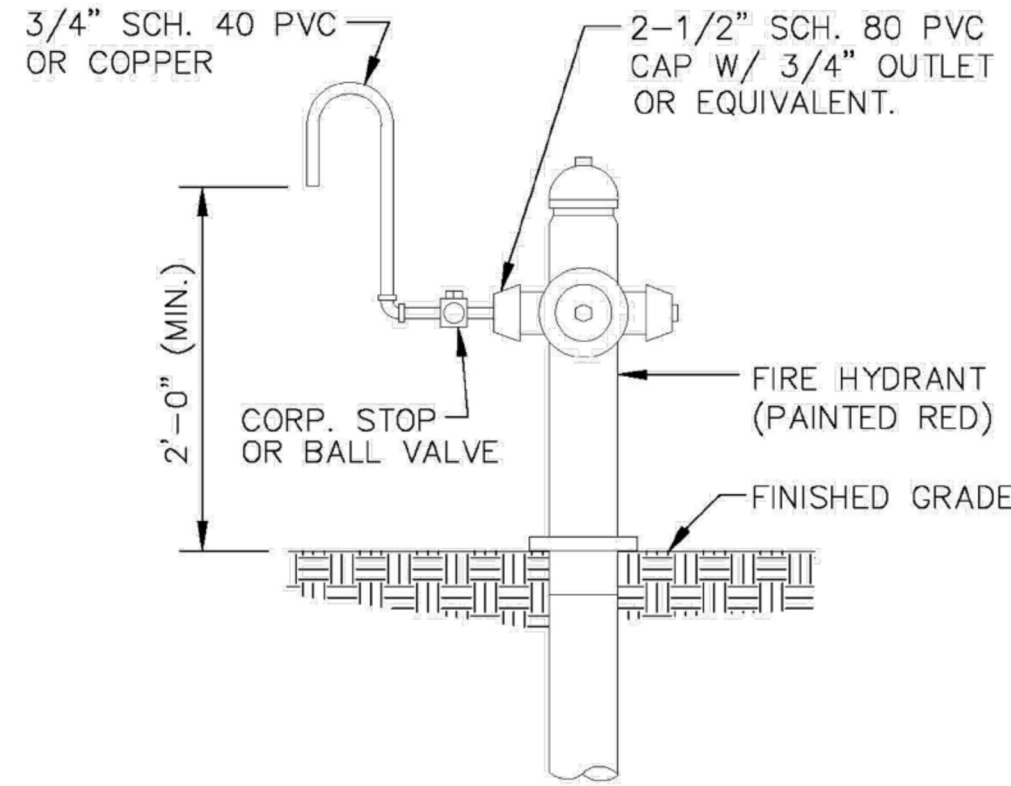


SAMPLE POINT (MAIN)

ALL D.I.P. TO BE PAINTED
BLUE ON TOP HALF OF PIPE.

ENGINEERING STANDARDS 2019			
REVISIONS		ENGINEERING DIVISION CITY OF POMPAÑO BEACH	SAMPLE POINT (MAIN)
BY	DATE		
S.S.	04-2005		
		SCALE: N.T.S.	DATE: JUNE 1996 DWG. NO. 100-1

J:\City STANDARDS\2019 Standards Details\Water 1-1.dwg, 11/2/2018 2:33:44 PM



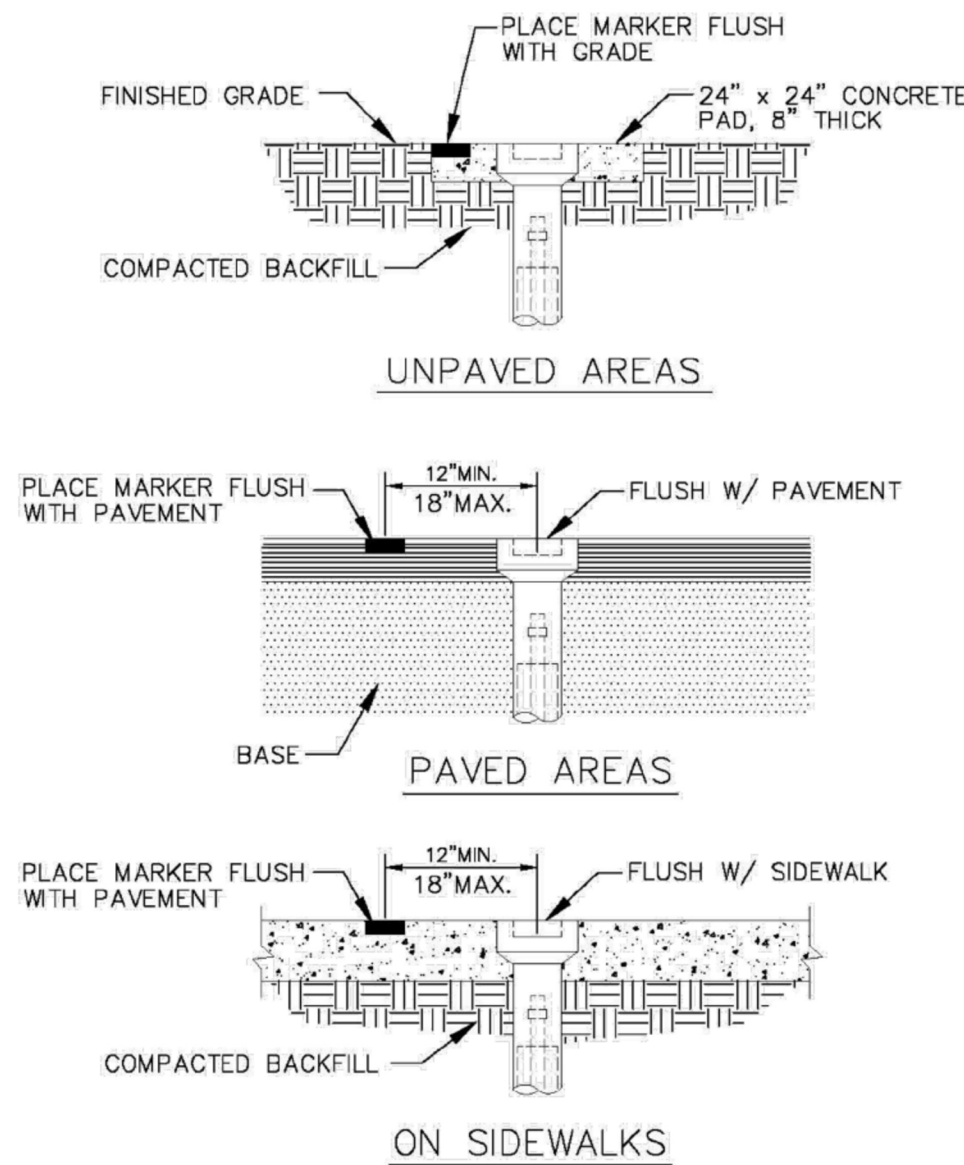
SAMPLE POINT (HYDRANT)

ALL POMPAÑO BEACH HYDRANTS SHALL BE PAINTED RED.

ALL D.I.P. TO BE PAINTED
BLUE ON TOP HALF OF PIPE.

ENGINEERING STANDARDS 2019			
REVISIONS		ENGINEERING DIVISION CITY OF POMPAÑO BEACH	SAMPLE POINT (HYDRANT)
BY	DATE		
S.S.	04-2005		
		SCALE: N.T.S.	DATE: JUNE 1996 DWG. NO. 101-1

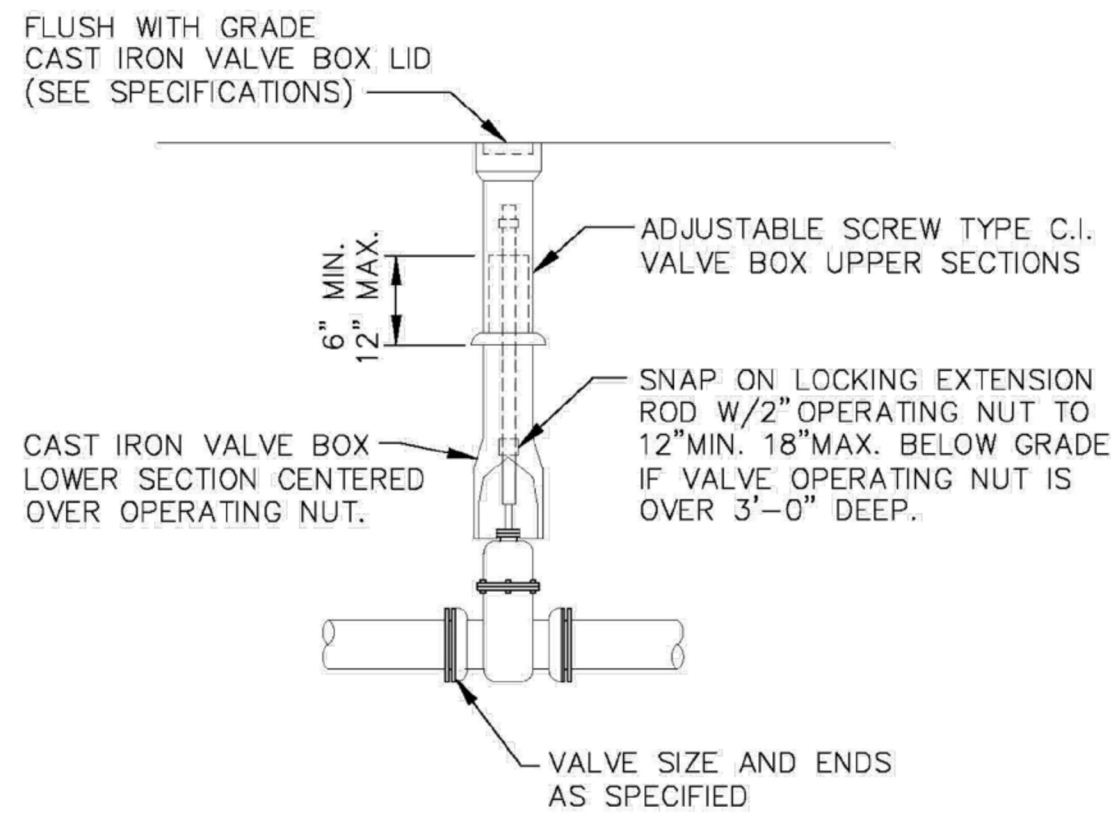
J:\City STANDARDS\2019 Standards Details\Water 1-1.dwg, 11/2/2018 2:34:09 PM



VALVE BOX SETTINGS

ENGINEERING STANDARDS 2019			
REVISIONS		ENGINEERING DIVISION CITY OF POMPAÑO BEACH	VALVE BOX SETTINGS
BY	DATE		
S.S.	04-2005		
		SCALE: N.T.S.	DATE: JUNE 1996 DWG. NO. 102-1

J:\City STANDARDS\2019 Standards Details\Water 1-1.dwg, 11/2/2018 2:34:39 PM



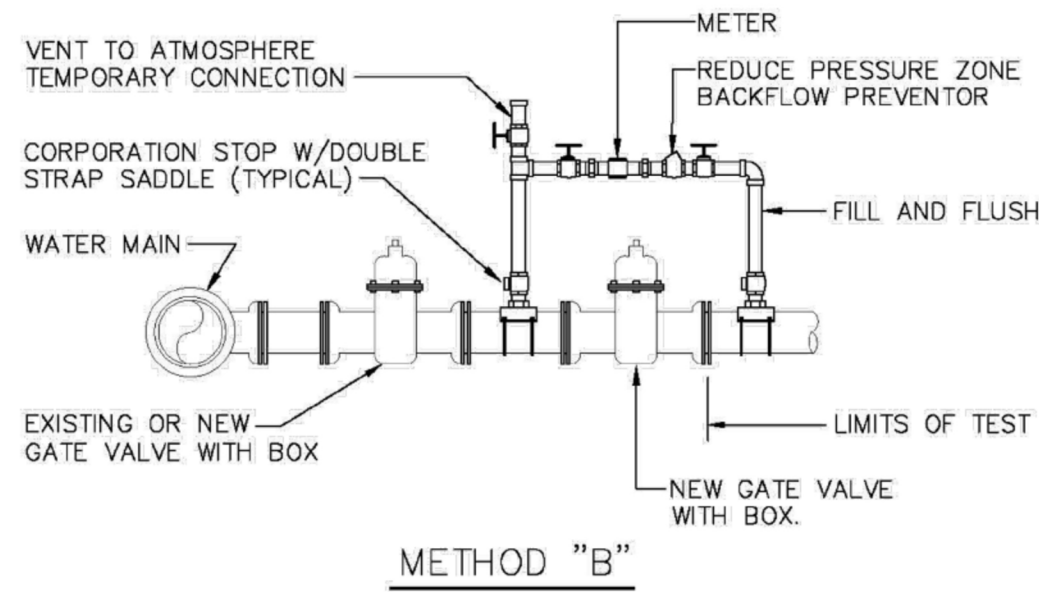
GATE OR PLUG VALVE SETTING

USE MEGALUGS AT ALL PIPE JOINTS

ALL D.I.P. TO BE PAINTED
BLUE ON TOP HALF OF PIPE.

ENGINEERING STANDARDS 2019			
REVISIONS		ENGINEERING DIVISION CITY OF POMPAÑO BEACH	GATE OR PLUG VALVE SETTINGS
BY	DATE		
S.S.	04-2005		
T.W.	11-2007		
		SCALE: N.T.S.	DATE: JUNE 1996 DWG. NO. 103-1

J:\City STANDARDS\2019 Standards Details\Water 1-1.dwg, 11/2/2018 2:35:09 PM



METHOD "B"

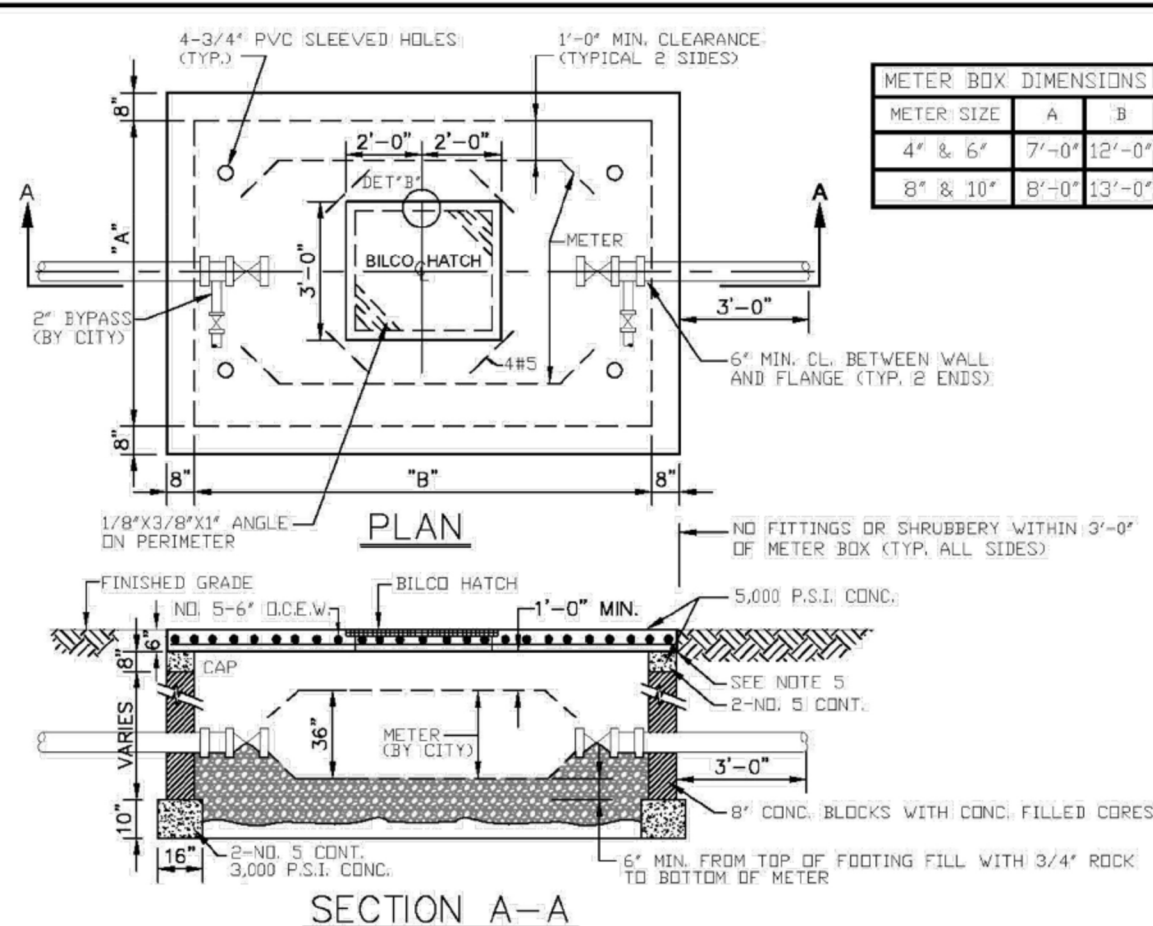
- NOTES:
1. WATER MAIN TO BE PRESSURE TESTED AND DISINFECTED ACCORDING TO BROWARD COUNTY PUBLIC HEALTH UNIT REGULATIONS, AWWA, AND MUNICIPAL SPECIFICATIONS IN EFFECT.
 2. BACTERIOLOGICAL TESTS ARE TO BE PERFORMED BY THE CONTRACTOR AND AN APPROVED TESTING LABORATORY.
 3. REMOVE TEMPORARY CONNECTION AT SADDLE ON NEW MAINS AFTER FILLING AND FLUSHING HAS BEEN COMPLETED AND REPLACE WITH BRASS PLUG
 4. PROVIDE ALL NECESSARY THRUST BLOCKS OR OTHER RESTRAINTS.
 5. FILLING AND FLUSHING LOCATIONS SHALL BE COORDINATED BY THE CONTRACTOR, ENGINEER, AND CITY.
 6. VENT TO ATMOSPHERE SHALL REMAIN OPEN DURING ALL PHASES OF PRESSURE TESTING.
 7. AFTER COMPLETION FILL AND FLUSH CONNECTION
 8. USE MEGALUGS AT ALL PIPE JOINTS

FILLING AND FLUSHING CONNECTION

ALL D.I.P. TO BE PAINTED
BLUE ON TOP HALF OF PIPE.

ENGINEERING STANDARDS 2019			
REVISIONS		ENGINEERING DIVISION CITY OF POMPAÑO BEACH	FILLING / FLUSHING CONNECTION
BY	DATE		
S.S.	04-2005		
T.W.	11-2007		
S.S.	01-2012		
		SCALE: N.T.S.	DATE: JUNE 1996 DWG. NO. 104-1

J:\City STANDARDS\2019 Standards Details\Water 1-1.dwg, 11/2/2018 2:35:38 PM



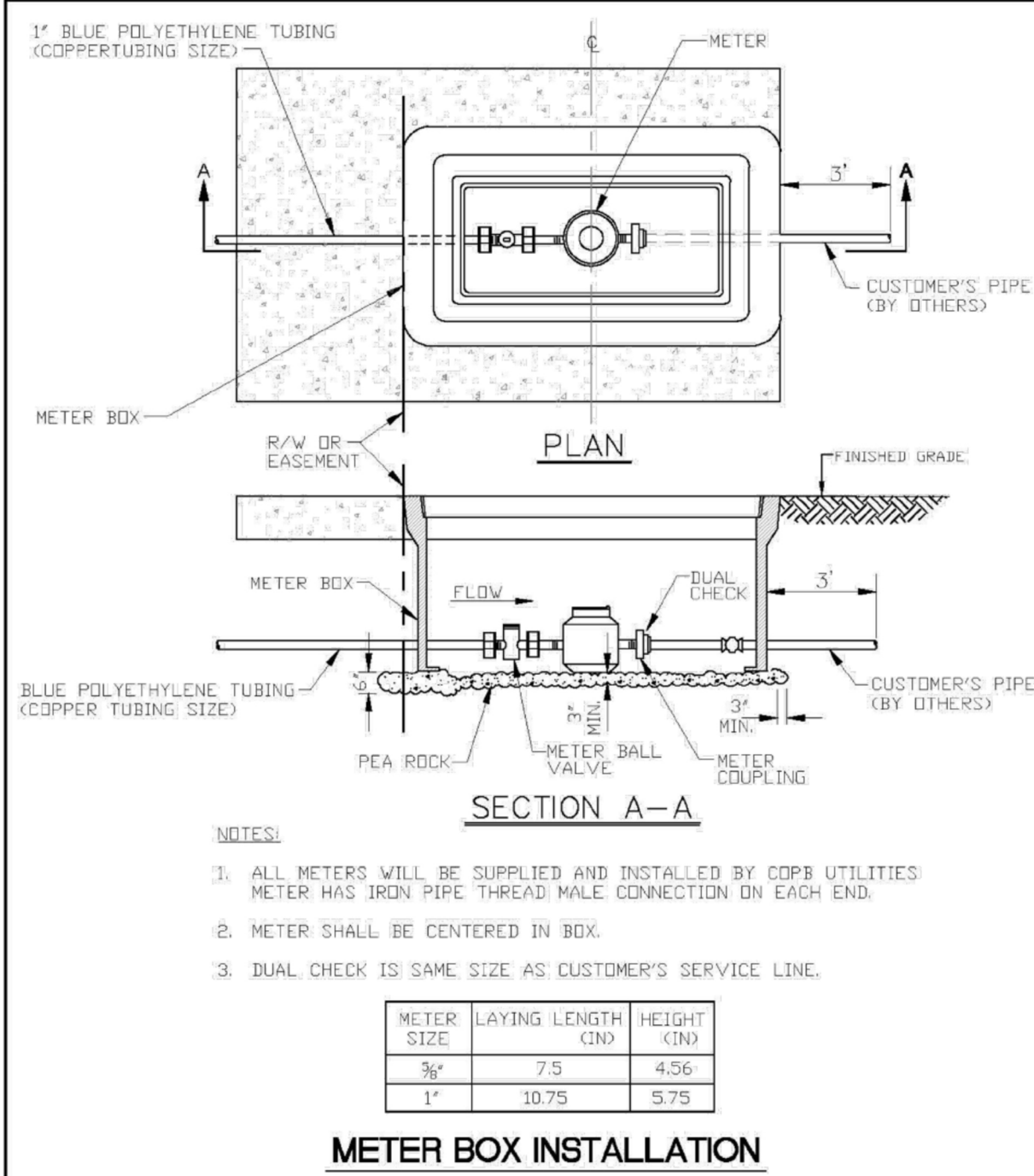
SECTION A-A

- NOTES:
1. THIS STRUCTURE & LID ARE FOR NON-TRAFFIC BEARING ONLY.
 2. DO NOT CONSTRUCT METER BOX UNTIL AFTER METER IS IN PLACE.
 3. CENTER BOX AROUND METER.
 4. DO NOT TIE THE CONCRETE LID TO CONCRETE WALLS.
 5. TOP OF LID TO BE @ FINISH GRADE ELEV.
 6. CUT OUT REPLACEABLE 10" SQUARE OVER EACH READING HEAD & FASTEN WITH CHAIN.
 7. FITS NEPTUNE R450 ANTENNA.
 8. BILCO HATCH MODEL J-AL OR J-DAL OR EQUAL.

LARGE METER BOX

ENGINEERING STANDARDS 2019			
REVISIONS		ENGINEERING DIVISION CITY OF POMPAÑO BEACH	LARGE METER BOX
BY	DATE		
T.W.	03-2008		
S.S.	01-2012		
S.S.	11-2012		
		SCALE: N.T.S.	DATE: JUNE 1996 DWG. NO. 105-1

J:\City STANDARDS\2019 Standards Details\Water 1-1.dwg, 11/2/2018 2:36:00 PM



SECTION A-A

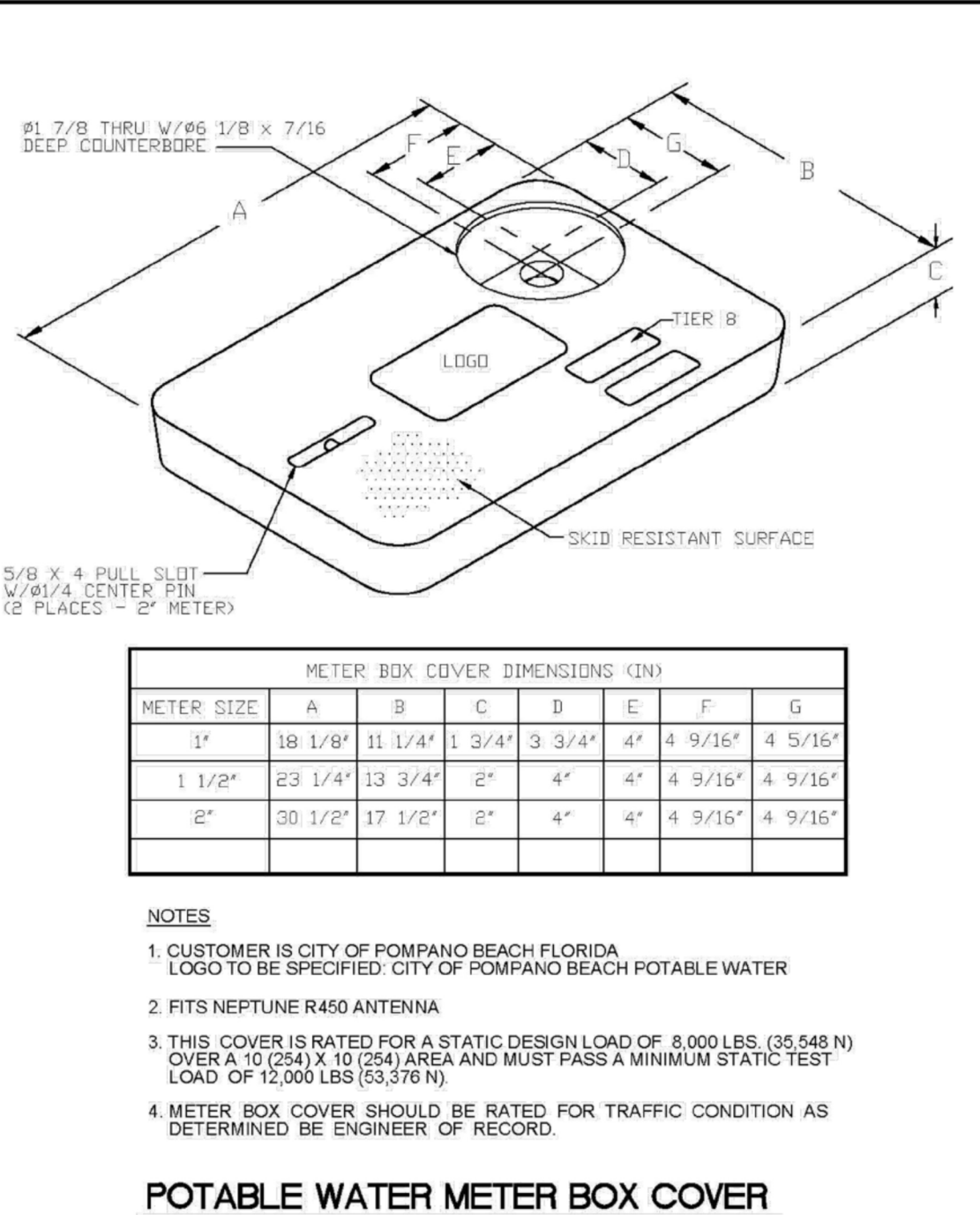
- NOTES:
1. ALL METERS WILL BE SUPPLIED AND INSTALLED BY COPB UTILITIES. METER HAS IRON PIPE THREAD MALE CONNECTION ON EACH END.
 2. METER SHALL BE CENTERED IN BOX.
 3. DUAL CHECK IS SAME SIZE AS CUSTOMER'S SERVICE LINE.

METER SIZE	LAYING LENGTH (IN)	HEIGHT (IN)
1"	7.5	4.56
1 1/2"	10.75	5.75

METER BOX INSTALLATION

ENGINEERING STANDARDS 2019			
REVISIONS		ENGINEERING DIVISION CITY OF POMPAÑO BEACH	METER BOX INSTALLATION FOR 5/8" AND 1" METERS
BY	DATE		
S.S.	11-2012		
		SCALE: N.T.S.	DATE: JAN. 2012 DWG. NO. 105-2

J:\City STANDARDS\2019 Standards Details\Water 1-1.dwg, 11/2/2018 2:36:38 PM



- NOTES:
1. CUSTOMER IS CITY OF POMPAÑO BEACH FLORIDA. LOGO TO BE SPECIFIED. CITY OF POMPAÑO BEACH POTABLE WATER.
 2. FITS NEPTUNE R450 ANTENNA.
 3. THIS COVER IS RATED FOR A STATIC DESIGN LOAD OF 8,000 LBS. (35,548 N) OVER A 10 (254) X 10 (254) AREA AND MUST PASS A MINIMUM STATIC TEST LOAD OF 12,000 LBS (53,378 N).
 4. METER BOX COVER SHOULD BE RATED FOR TRAFFIC CONDITION AS DETERMINED BY ENGINEER OF RECORD.

POTABLE WATER METER BOX COVER

ENGINEERING STANDARDS 2019			
REVISIONS		ENGINEERING DIVISION CITY OF POMPAÑO BEACH	TYPICAL METER BOX COVER
BY	DATE		
S.S.	11-2012		
		SCALE: N.T.S.	DATE: JAN. 2012 DWG. NO. 105-3

OWNER | DEVELOPER:



DESIGN + BUILD CONTRACTOR:



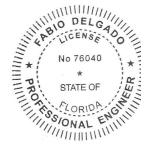
DESIGN CONSULTANT:



ARCHITECT OF RECORD:

RUBEN J. PUJOL
A.I.A. # 0010458
P H O N E : (3 0 5) 9 6 8 - 2 1 5 5
1 2 2 3 7 S . W . 2 0 4 T E R R A C E
M I A M I , F L O R I D A 3 3 1 7 7

SIGN AND SEAL:



Digitally signed by Fabio J Delgado De Michele
Date: 2023.06.16 18:25:05 -04'00'

REVISIONS/COMMENTS:

PROJECT:

324 HAUS
MIXED USE | FLEX BUILDING
324 NW 6TH STREET
POMPAÑO BEACH, FL 33060

PROJECT NO.: 22-031

DRAWN BY:

DATE: JULY- 2022

SHEET NAME:

WATER AND SANITARY
SEWER DETAILS

DRC
P22-12000032
07/19/2023